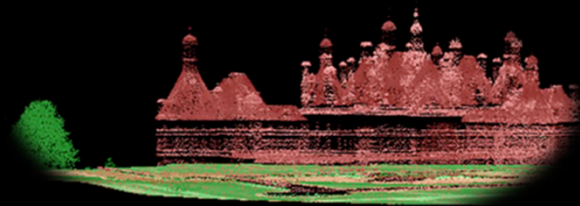


# TRAIL 2016



Training and Research on the  
Archaeological Interpretation of LiDAR  
Chambord (Loir-et-Cher, France)  
17 - 20 May

## Workshop Repository : Lidar & Pratiques

### Pathways

Laure Nuninger,  
Xavier Rodier,  
Catherine Fruchart,  
Laure Saligny,  
Philip Verhagen

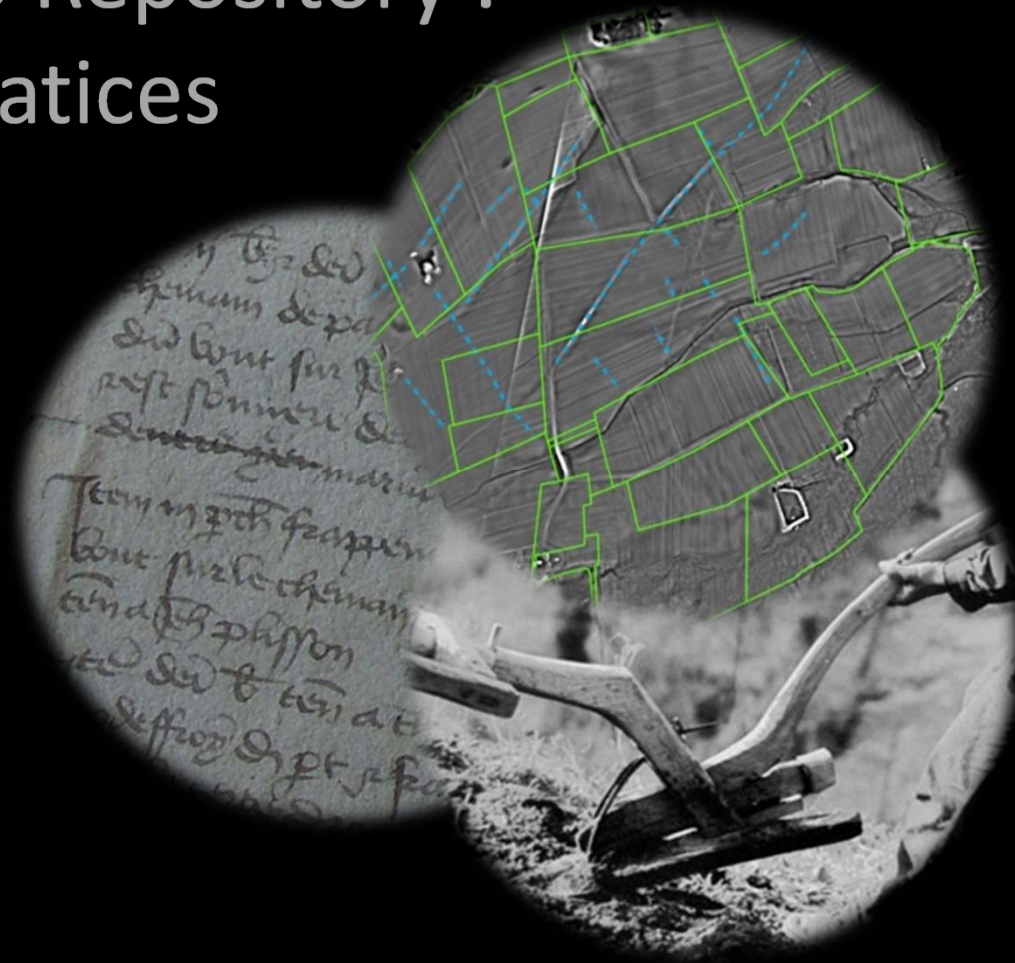




Fig. 1. Swarm of holloways around Iron Age barrows (Tupalice, Northern Slovenia)

By inhabiting the world through moving and walking, a pattern of interwoven trails is created rather than a network of intersecting transport routes (INGOLD 2007, 80). Henri LEFEBVRE (1991, 117–118) speaks of "reticular patterns left by animals, both wild and domestic, and by people (in and around the houses of village or small town, as in towns's immediate environs." Tim Ingold calls this pattern meshwork (INGOLD 2007, 80). It is an entanglement of lines, "trails along which life is lived" (INGOLD 2007, 81), where people are "coming and going" (INGOLD 2007, 117), as they move back and forth between pastures, fields, forests and villages within the daily and seasonal cycle.

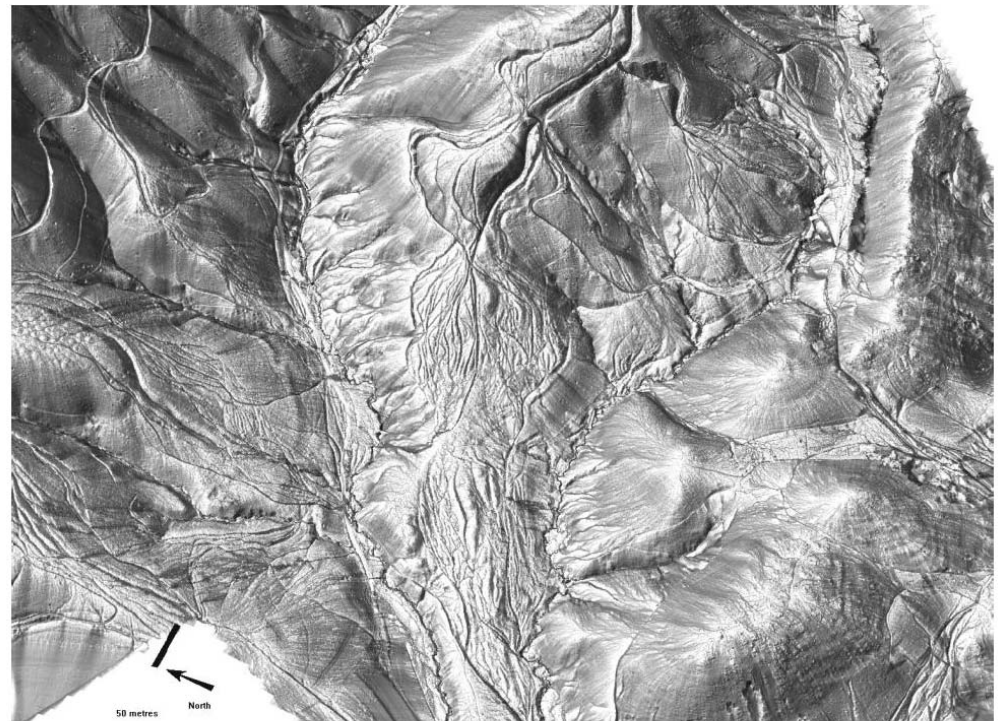
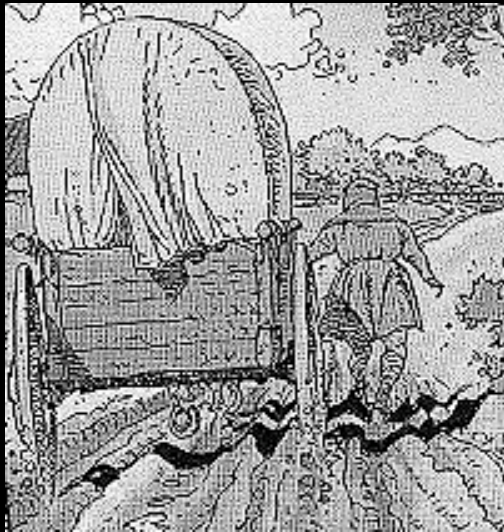


Fig. 2. Simulated surface runoff on a landscape with holloways (Tupalice, Northern Slovenia). Holloways are diverting the flow of water over the landscape, becoming a streams





She passed the strip and kept walking toward the campsite she had discovered. She wondered if she could find it again with the wind bending the grass and clumps of sagebrush. Easy for things to disappear in this landscape. So many stories of the Old Time that Grandfather had told about the people scattering across landscape like this, hiding in the dirt and brush, scarcely breathing, not letting out a sound. The soldiers had ridden past, their white eyes unaccustomed to the play of sunshine and shadow, the wind moving everything about.

She stopped to get her bearings. How far from the strip had she walked? Half a mile? She saw the slight depression then. She pulled over and started walking across the grass. Footprints were still visible, hers and Ruth's. She wondered if there had been footprints here when Gianelli and a forensics team were crawling over the area, and if they had made casts. In the Old Time, no footprints would have been left behind. Those who went last would sweep and brush the trail behind them. The people could cross the plains without leaving a sign.

The campsite looked the same as yesterday, and she wondered what she had hoped to discover. Something she and Ruth, as well as the investigators, might have missed? Something that might identify an anonymous caller? But there was no proof he had been here. He could have been farther along the lake, up above, looking down. Hiding in the grass where no one could see him. Except that someone had been at this campsite recently, and whoever it was had a full view of the strip of land.

She found a stick and started prodding the ashes. The forensics team would have done the same, scattering them about as they prodded. If anything had been left behind, they would have found it. A few feet from the fire pit was a flat-topped boulder. She sat down, thinking that the caller could have sat here and looked out at the lake. And did nothing! If Robert was murdered, the caller had done nothing to help him. Now she had a better sense of the man: scared to death for his own life; unable or unwilling to help someone else.

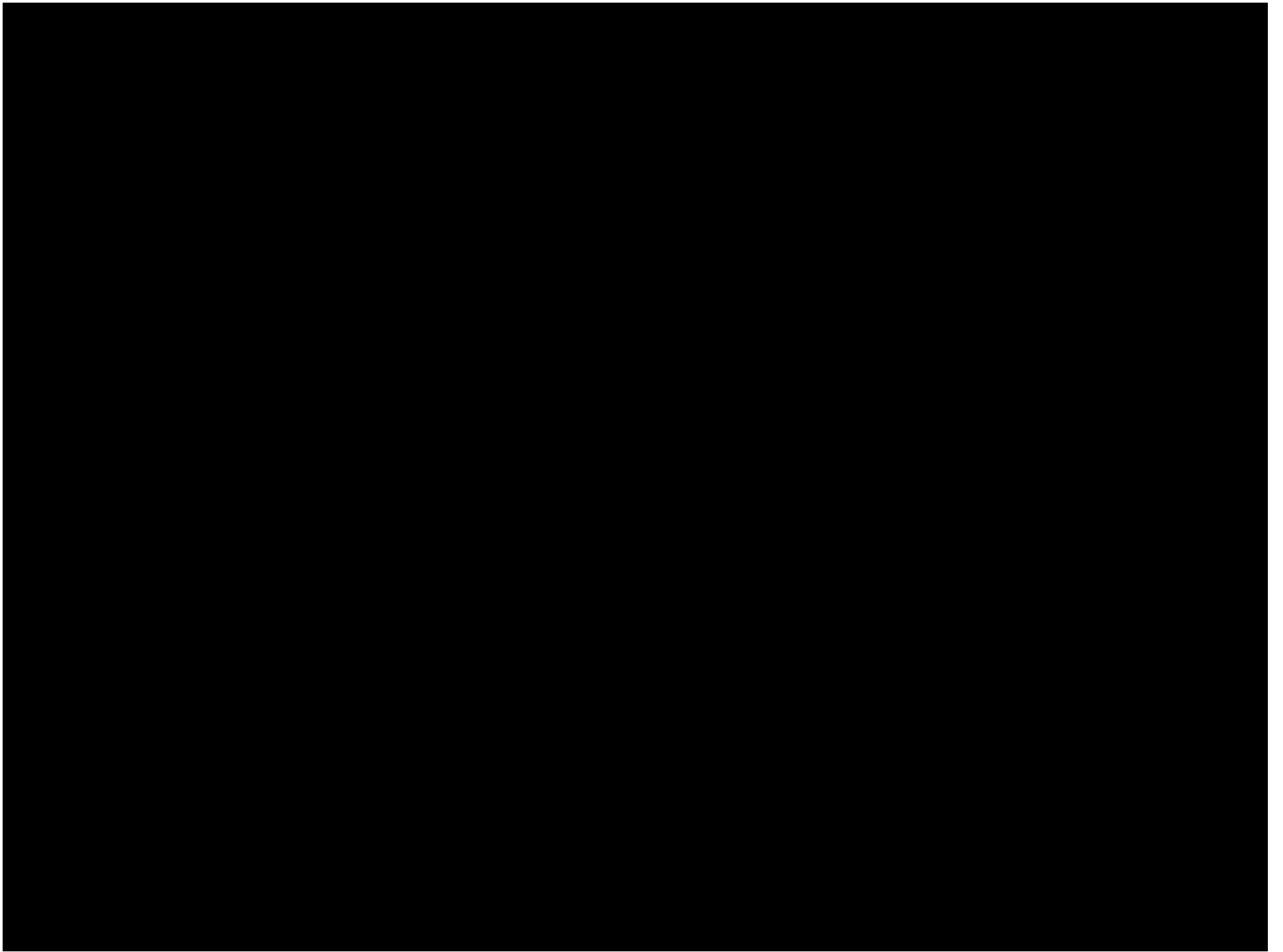
M. Coel The man who fell from the sky











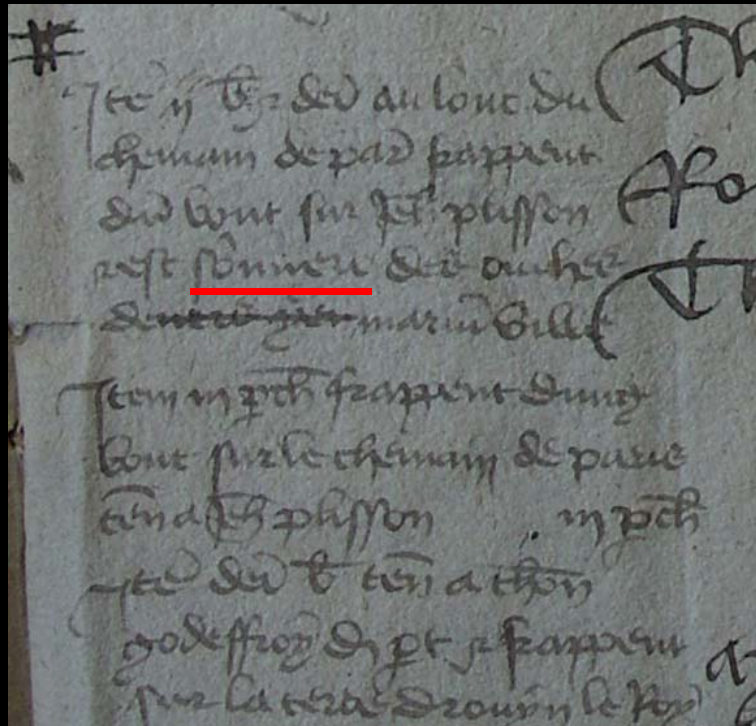
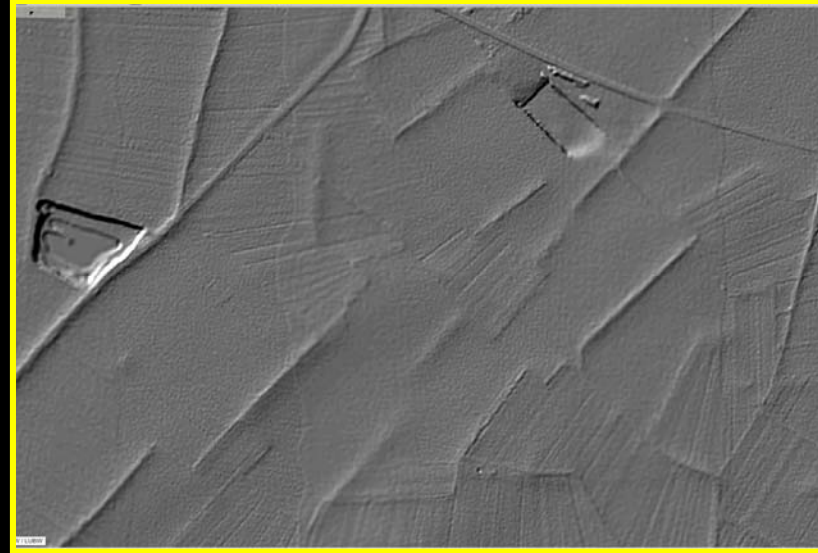








„Celtic“ fields (B. Sittler)

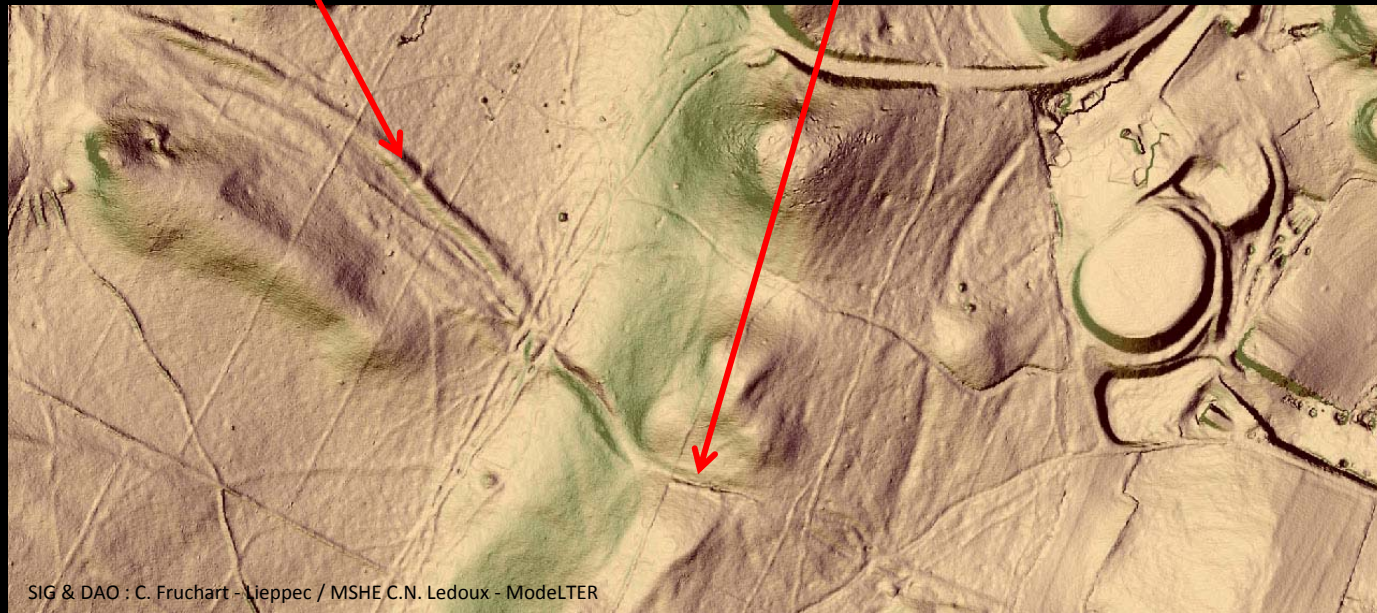
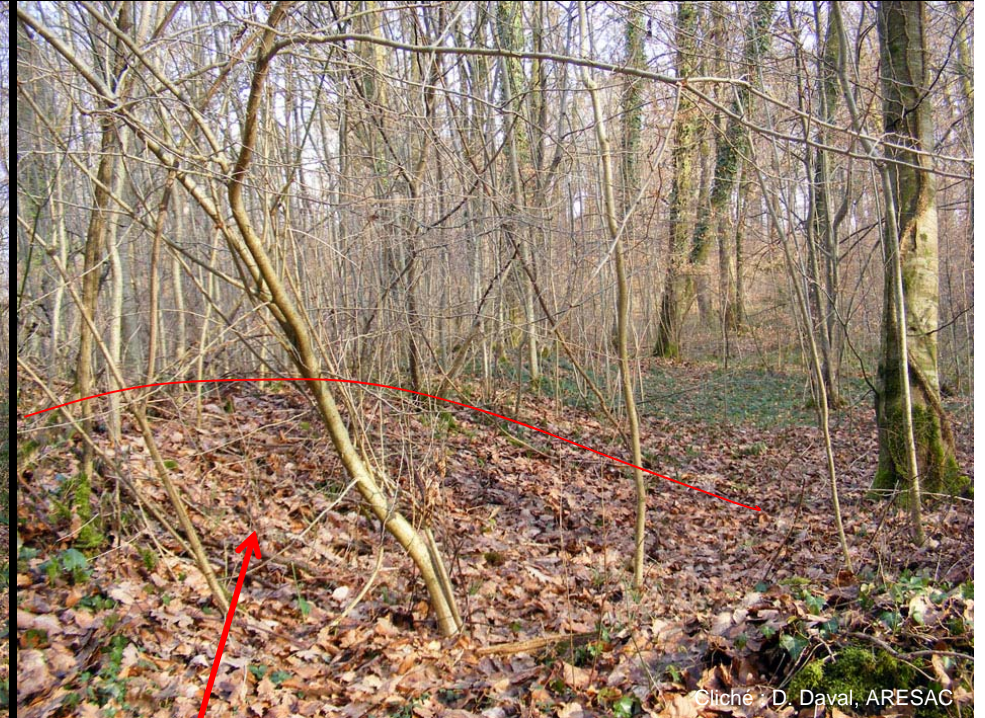


**Sommière** = used as « service road »

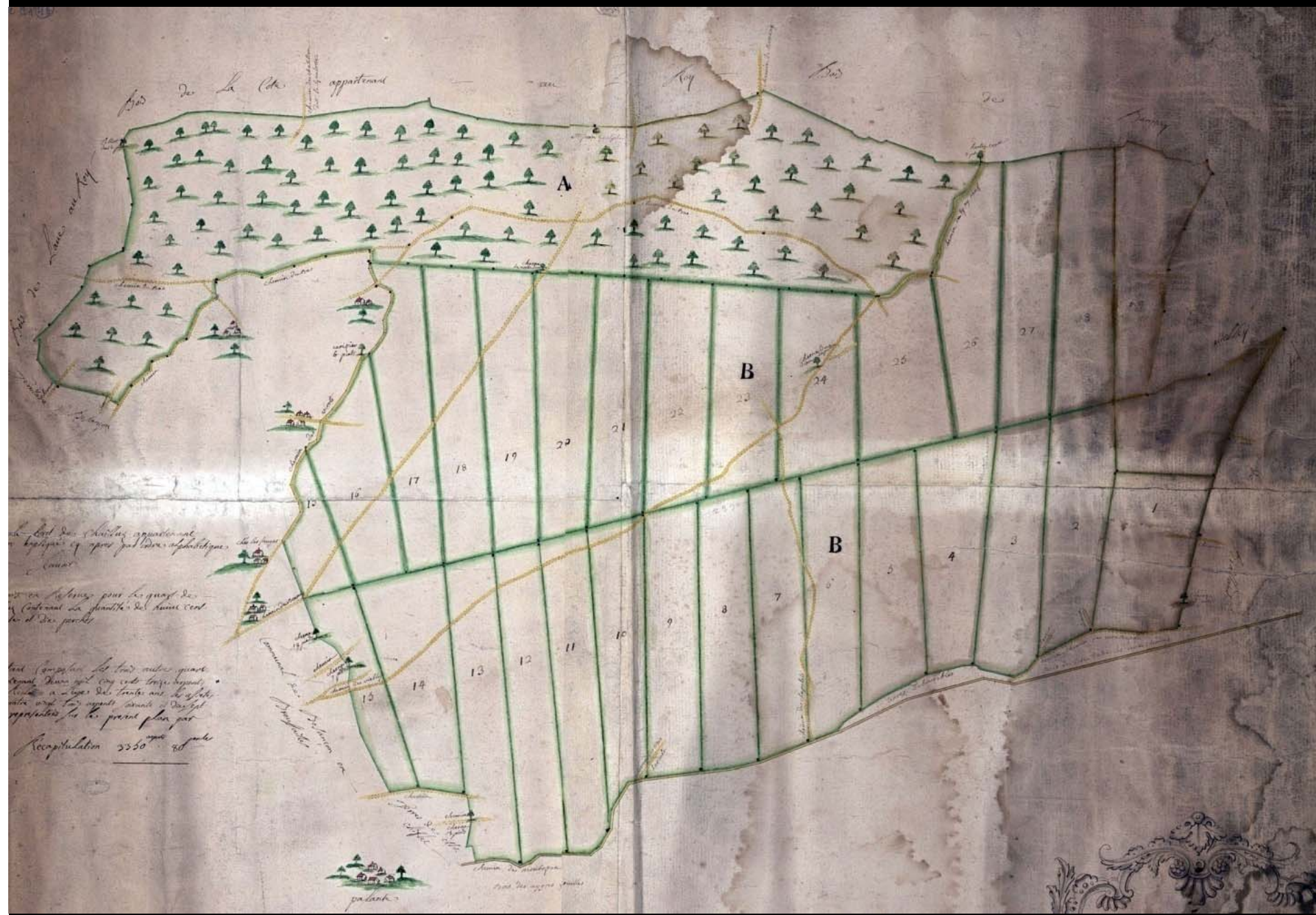
For III buniers (surface unity) located at the « fontasne » (spring) at the field said dit « le carteau » touch one side on the « bois parc (?) » and is **sommière** of the fields touching above the « grand chemin de Paris » (road from Paris)

Censier de Toury de 1446, [Source](#)  
: AD Yvelines, D 1315  
S. Leturcq 2015



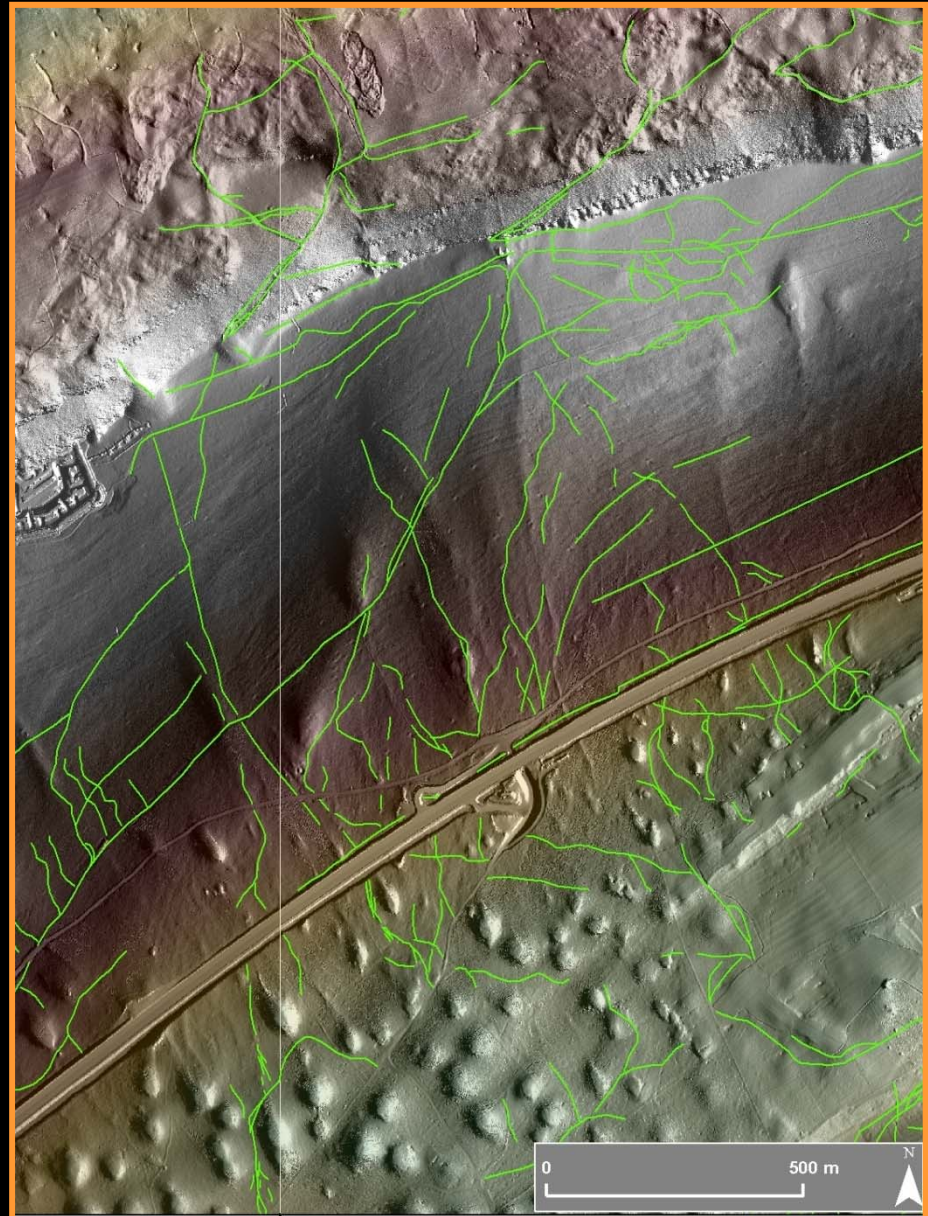
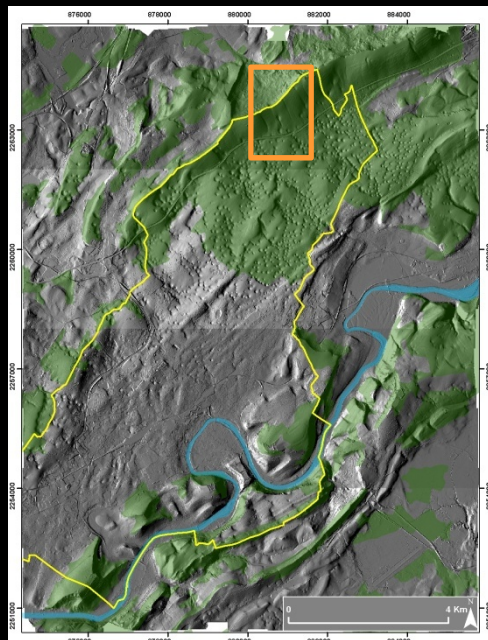




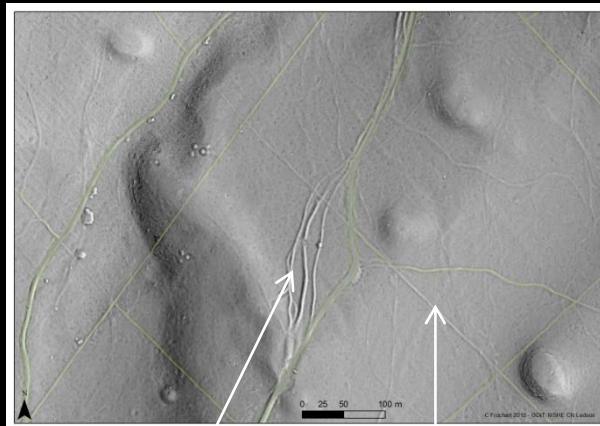




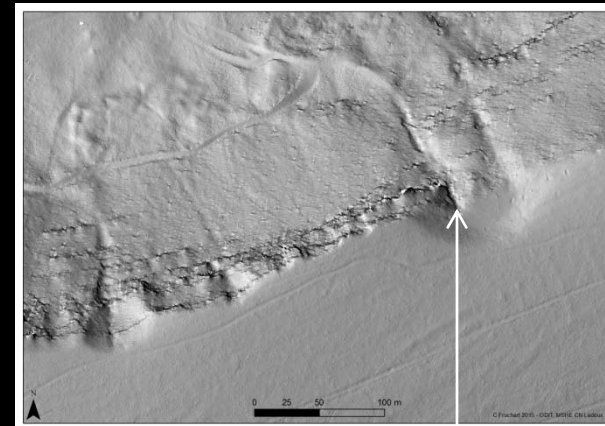
### 3 : des éléments de voirie







Chemins d'exploitation et limites parcellaires



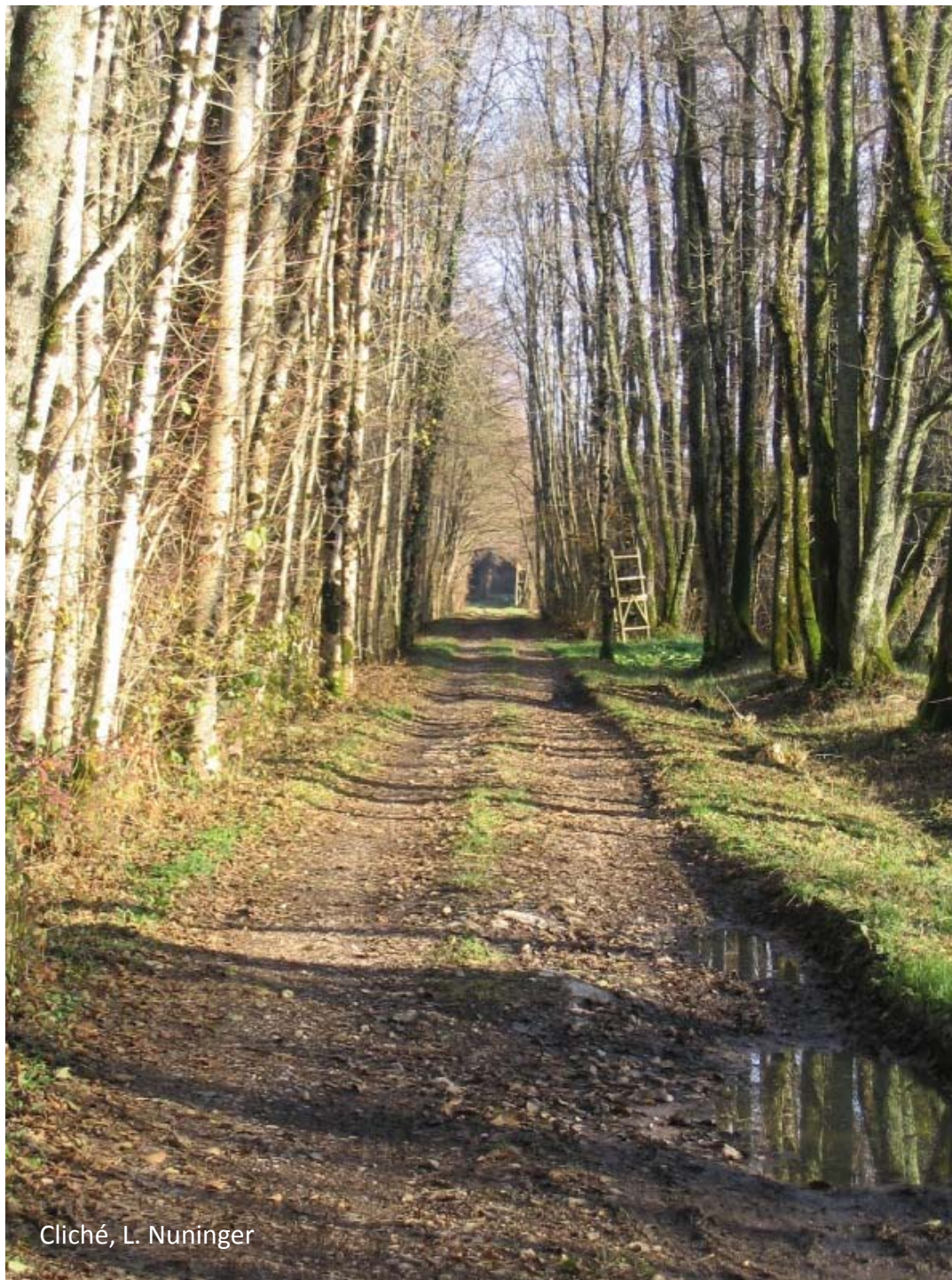
Couloirs de vidange du bois



16<sup>e</sup> s : premier plan figurant le massif de Chailluz





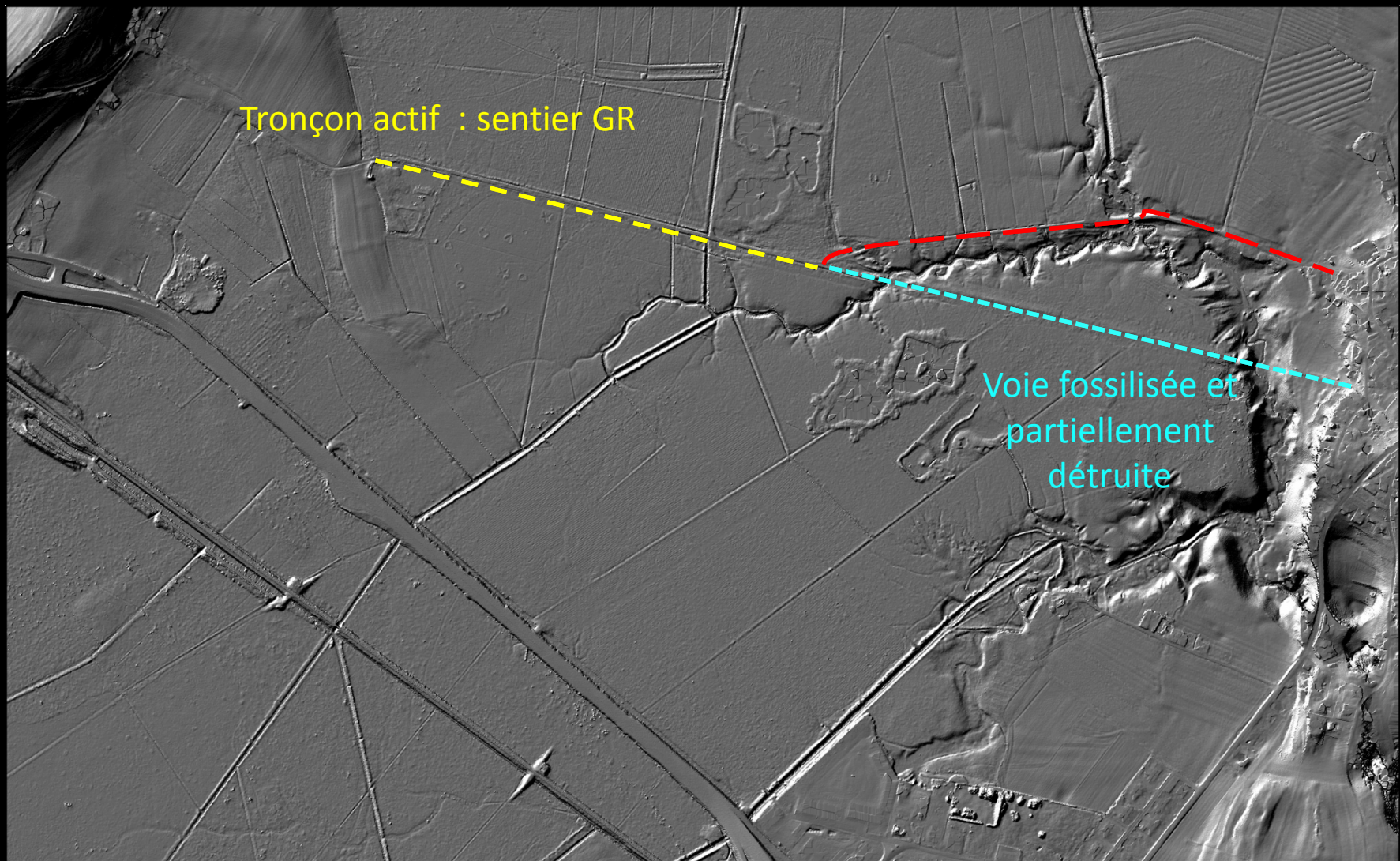


Cliché, L. Nuninger



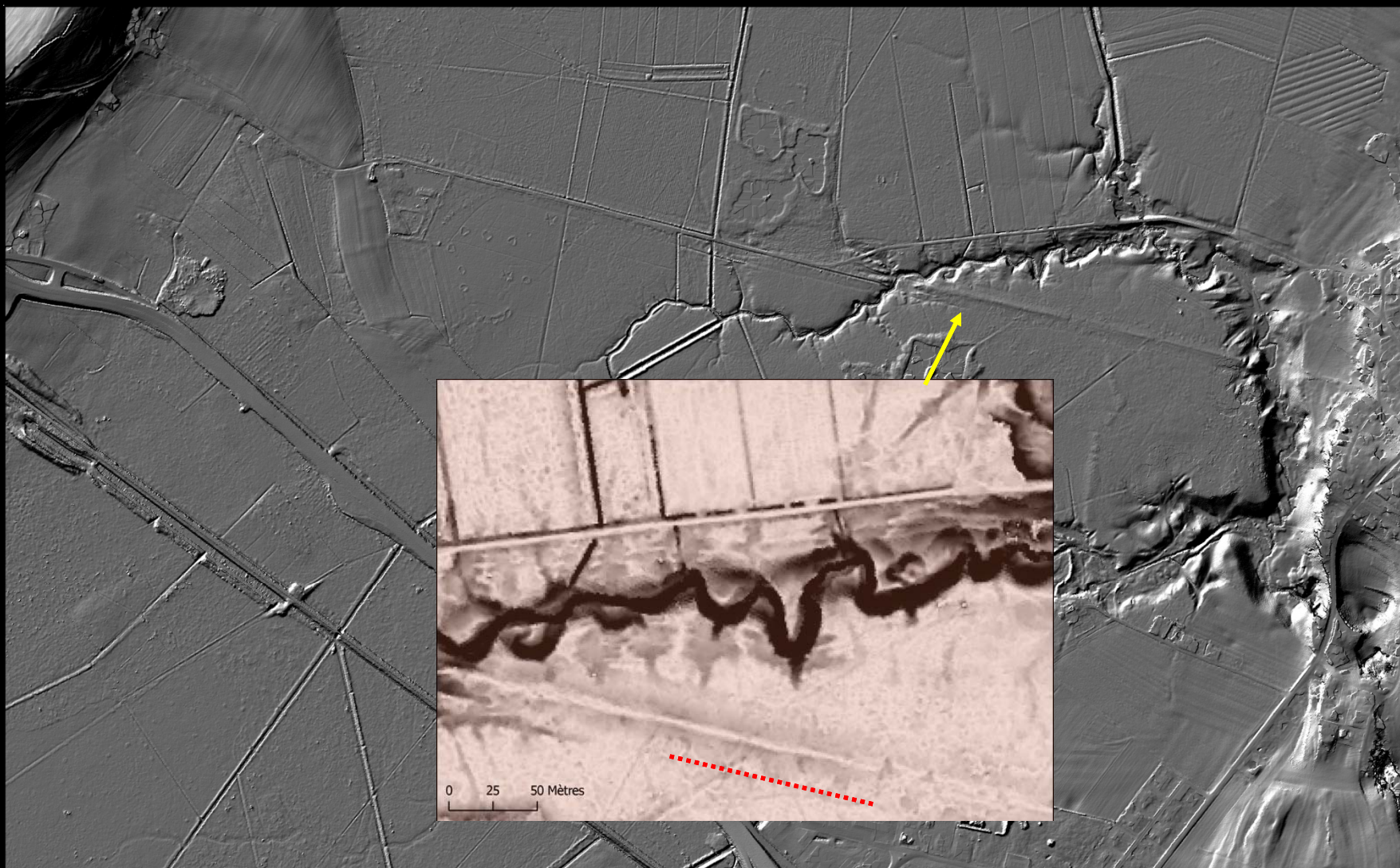
Dessin, B. Poire





LIEPPEC® MSHE C.N. Ledoux - LEA ModelTER, L. Nuninger

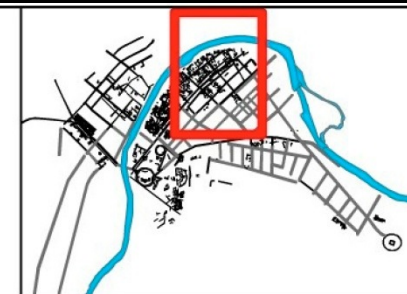




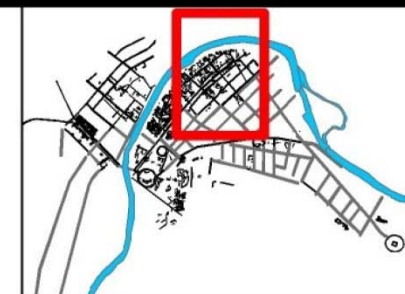
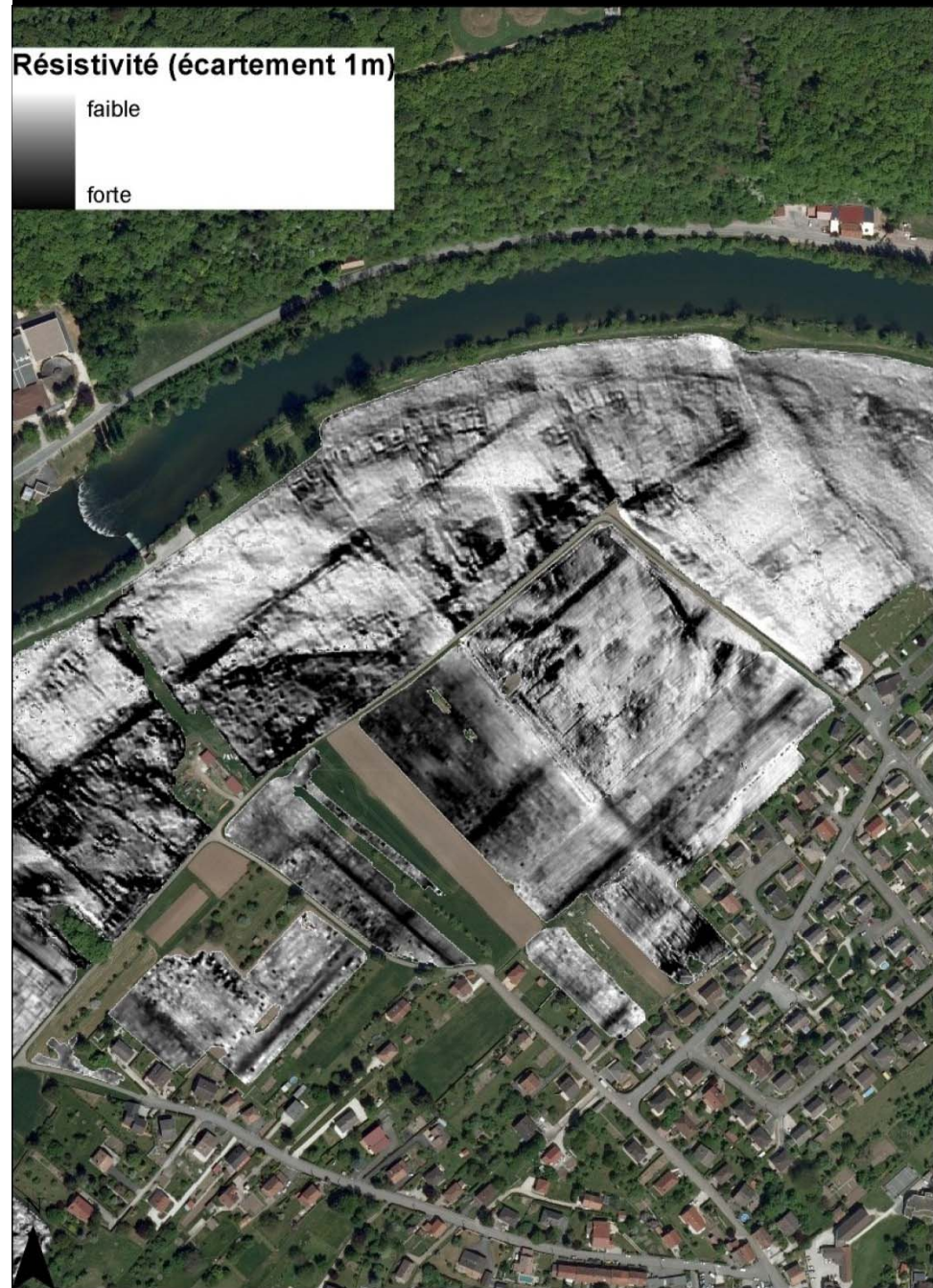
LIEPPEC® MSHE C.N. Ledoux - LEA ModelTER, L. Nuninger



# Topographic Position Index (m) altitude (m)









Dimensions:

